



# Sel Environmental

## Sports & Landscape



### **Rooftop Facilities With A Surface of Your Choice**

Sel excel at designing and constructing unique rooftop spaces for sport and leisure. Our sports surfaces are selected based on quality, robustness and permeability. All our surfaces are stringently tested in compliance with various sports regulations.



### **Fire Resistant Synthetic Grass Pitch System**

SELSports offer a synthetic grass pitch system that meets the requirements of external fire exposure to roofs, BS 476-3:2004 and CEN/TS1187:2012 – Test 4, including EN 13501-5 T4 classification. This system has been independently tested and verified by the independent BRE Group, UKAS approved laboratory.



### **Polymeric Rubber**

Compliant with IAAF/Sport England standards, can be used for a rooftop running track, rooftop MUGA, rooftop playground or as a safety surfacing.

**[www.selsports.co.uk](http://www.selsports.co.uk)**

SEL Environmental Ltd  
Canal House, Bonsall Street,  
Blackburn, BB2 4DD

Call: 01254 589987





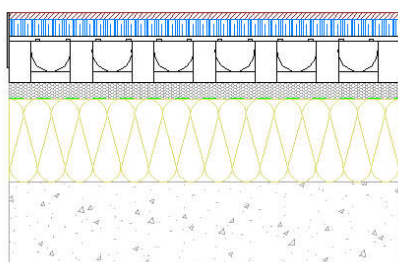
# SELSPORTS

## ROOFTOP SPORTS SURFACES

### POLYMERIC SURFACE

Polymeric surfaces have long been recognised and recommended by Sport England. SELSports can design and build a polymeric surface to suit your rooftop layout. We use a full EPDM system accredited to IAAF standards. This surface is ideal for MUGA areas, running lanes, etc... due to its good slip resistance and shock absorbency.

#### POLYMERIC SYSTEM



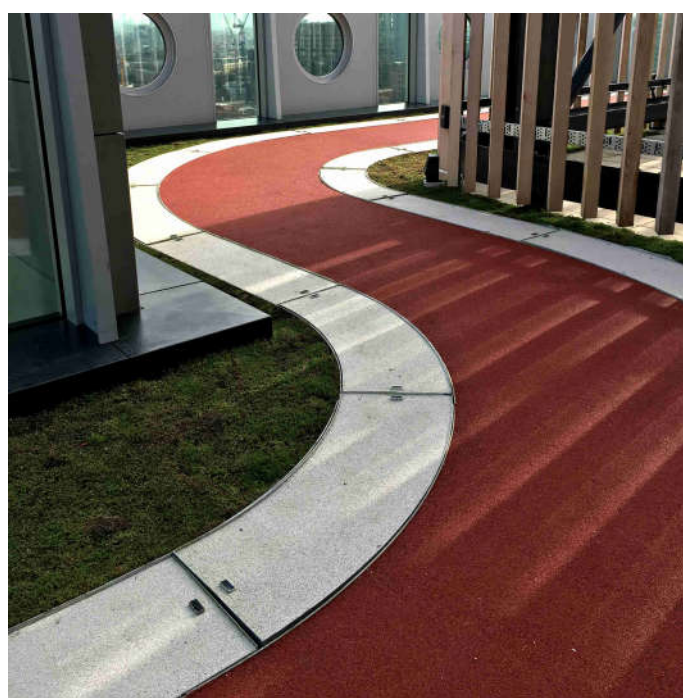
13mm thk Polymeric Surface (15 kg/m<sup>2</sup>)  
(EPDM rubber granules with PU binder)  
30mm thk Resin Bound Gravel (60kg/m<sup>2</sup>)  
85mm thk SELSports Units  
Drainage Layer (10kg/m<sup>2</sup>)  
30mm thk average depth, 2/6mm Gravel  
Regulation layer (54kg/m<sup>2</sup>)  
WASP Heavy Duty Geotextile (0.3kg/m<sup>2</sup>)  
Roof Insulation & Waterproofing System  
(By Others)  
Concrete Roof Deck (By Others)

Typical Polymeric Construction

This type of surface allows for wet poured rubber to be hand laid, which prevents the possibility of the EPDM granules escaping to the surrounding areas and with the 13mm deep surface being a full EPDM there is less possibility of the surface fading or blackening with high use as the full depth of the polymeric is a consistent colour. The SELSports Polymeric option offers a lightweight permeable paving solution for rooftop sports, social and recreational areas.

#### Typical Loadings

- Polymeric EPDM - 15kg/m<sup>2</sup>
- Resin Bound Gravel - 60kg/m<sup>2</sup>
- 85mm SELSports units - 10kg/m<sup>2</sup>
- 30mm 2/6mm regulating - 54kg/m<sup>2</sup>
- WASP HD Geotextile - 0.3kg/m<sup>2</sup>



#### Benefits

- Permeable, rainwater can efficiently pass through the finished surface.
- Fast installation, a 2 man gang can lay 30m<sup>2</sup> or more per hour and, with good weather conditions, a gang of 5 men would expect to cover 250m<sup>2</sup> in a single day
- Colour, there are a huge choice of colours available
- Flexible, once set it's flexible enabling some resistance to cracking
- Wheelchair friendly, making it ideal for DDA schemes

SELSports, Canal House, Bonsall Street,  
Blackburn BB2 4DD Tel: 01254 589987