



Sel Environmental

Sports & Landscape



Rooftop Facilities With A Surface of Your Choice

Sel excel at designing and constructing unique rooftop spaces for sport and leisure. Our sports surfaces are selected based on quality, robustness and permeability. All our surfaces are stringently tested in compliance with various sports regulations.



Fire Resistant Synthetic Grass Pitch System

SELSports offer a synthetic grass pitch system that meets the requirements of external fire exposure to roofs, BS 476-3:2004 and CEN/TS1187:2012 – Test 4, including EN 13501-5 T4 classification. This system has been independently tested and verified by the independent BRE Group, UKAS approved laboratory.



Polymeric Rubber

Compliant with IAAF/Sport England standards, can be used for a rooftop running track, rooftop MUGA, rooftop playground or as a safety surfacing.

www.selsports.co.uk

SEL Environmental Ltd
Canal House, Bonsall Street,
Blackburn, BB2 4DD

Call: 01254 589987

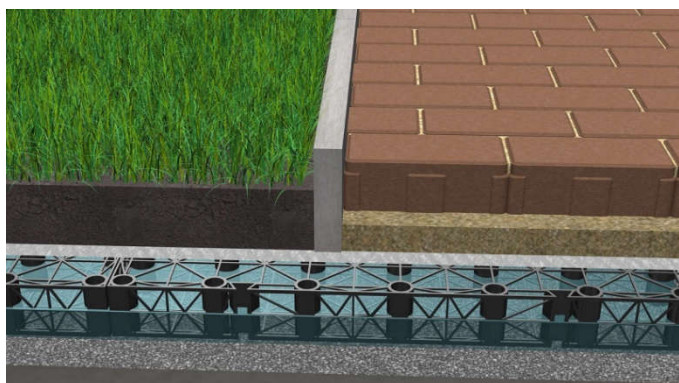


SELSPORTS

ROOFTOP SPORTS SURFACES

ROOFTOP RECREATION

Purpose-designed space located on the roof of a building that provides facilities for physical activity, relaxation, and social interaction. These areas are increasingly common in urban environments, where ground-level space is limited, and are often found on schools, residential blocks, offices, hospitals, and commercial buildings.

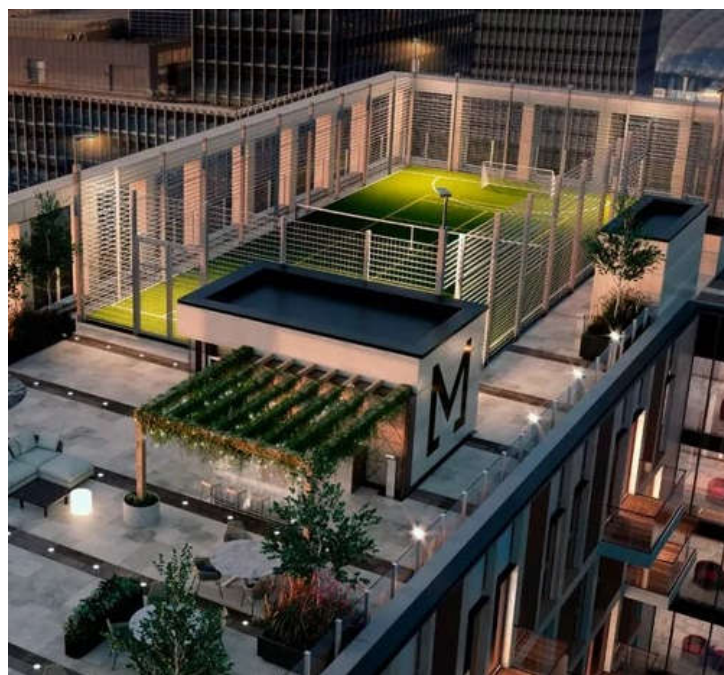


Typical Construction

Our motherboard approach not only creates a free draining all weather platform, it also allows for a range of surface finishes to be incorporated including block paving, slabs, resin bound, epdm rubber and synthetic grass. Soft landscaped areas can be easily integrated and benefit from our passive irrigation technologies.

Typical Loadings

- Polymeric EPDM - 15kg/m²
- Resin Bound Gravel - 60kg/m²
- 85mm SELSports units - 10kg/m²
- 30mm 2/6mm regulating - 54kg/m²
- WASP HD Geotextile - 0.3kg/m²



Benefits

- Offers a SuDS benefit
- Rainwater can efficiently pass through the finished surface into an attenuation layer below.
- Attenuation layer could reduce siphonic outlet size and quantity required.
- Can provide the urban cooling effect.
- Low maintenance.
- Fast installation, a 2 man gang can lay 30m² or more per hour and, with good weather conditions, a gang of 5 men would expect to cover 250m² in a single day.

SELSports, Canal House, Bonsall Street,
Blackburn BB2 4DD Tel: 01254 589987